

Mar 1954  
15



# Kentwood Players

PRESENT..

## HISTORY

Kentwood Players was organized because a small group of enthusiastic thespians believed a community Little Theatre would be a cultural asset to Westchester. Since its inception in December 1949, Kentwood Players has grown in size and undertaking just as the community of Westchester has itself.

Appreciative audiences will remember these successful Kentwood Players past productions:

- YOU CAN'T TAKE IT WITH YOU } 1950
- LAURA
- FOR LOVE OR MONEY } 1950-51
- FRESH FIELDS May '51
- THE CURSE OF AN ACHING HEART - Summer 1951
- HOLIDAY - FALL '51
- THE DARK TOWER '51
- CHICKEN EVERY SUNDAY '52
- ON THE BRIDGE AT MIDNIGHT - Summer 1952
- LOVE FROM A STRANGER - FALL '52
- GEORGE WASHINGTON SLEPT HERE 3/53
- THREE'S A FAMILY 5/53
- ARSENIC AND OLD LACE - Summer '53
- ANNA LUCASTA '53
- THREE MEN ON A HORSE '53

Kentwood Players is composed of a group that comes from every phase of community life. Only a small number have had professional experience, but all members feel that their activities contribute to the enjoyment of others as well as to themselves.

Tonight's production sees the Kentwood Players in its new home, The Westchester Clubhouse Auditorium, another step forward in establishing a stronger Little Theatre group for the community of Westchester.

All proceeds received from the opening night of CRY HAVOC are to be donated to Westchester Swims, Inc.

# "CRY HAVOC"

by

Allan R. Kenward

"Cry 'havoc', and let's slip the dogs of war;"  
Shakespeare - Julius Caesar, Act 3, Scene 1

## CAST

(In order of appearance)

Doc Marsh	Elsa Pierce
Smitty	Elizabeth Thornburgh
Flo Harris	Marjorie Mockett
Pat Conlin	Nan Space
Grace Lambert	Janet Marcom
Helen Domeret	Lee Braude
Nydia Joyce	Betty Francis
Susan West	Betty Ward
Andra West	Betty Reddin
Constance Marks	Lynn Neuman
Stephany Polden	Jill Duncan
Sadie	Ethel Sheneman
Native Woman	Doris Brown

Directed by

VINCENT SONSINI

May 7, 8 - 14, 15 - 21, 22

Curtain - 8:30 P.M.

Incidental music by Ricky Blalock, Dena Hernbloom, Martin Tautrim, Terry Blalock, and Jerry Stephen—under the direction of Hazel Case. Zenida Moisesief, accompanist.

Photographer—E. EAGLETON, 6017 So. La Brea

Elect . . .

# ALLAN K. JONAS

To Assembly

## VOTE "DEM."

## SYNOPSIS OF SCENES

"First in Spite of Hell" Motto of the defenders of Bataan

SCENE: A converted gun emplacement adjacent to Bataan Peninsula, early in 1942.

### ACT I

Scene 1—Afternoon

Scene 2—Four days later, 11:30 p.m.

### ACT II

Scene 1—Late afternoon, several days later.

### ACT III

Scene 1—Shortly before dawn, the following morning.

Scene 2—Several hours later.

Nescafe coffee will be served during intermission,  
compliments of the NESTLE' COMPANY.

**DR. ROBERT W. UPHOFF**  
OPTOMETRIST



Offices in  
Broadway Westchester Bldg.  
8739 S. Sepulveda Blvd.  
Los Angeles 45, Calif.  
OR. 1-7511 OR. 1-9177

**HILL MART**

7604 Sepulveda Blvd.

"Featuring Manning's  
Steer Beef"

## WHO'S WHO IN THE CAST



Elizabeth Thornburgh, a dramatics major in college, is well remembered by Westchester audiences for her fine portrayals of leading roles in "For Love or Money", "Chicken Every Sunday", "The Dark Tower" and "Love From A Stranger". Elizabeth has co-directed several Kentwood Players' productions and also supplied her talents as make-up artist.



Elsa Pierce is recognized as one of Kentwood Players most creative members. Besides her appearances in "You Can't Take It With You", two Melodramas, "Holiday", her leading role in "Chicken Every Sunday" and "Three's A Family", Elsa has contributed her artistic talents in costuming, set design, make-up, and music.



Marjorie Mockett is another well-known Kentwood Player, with a long list of dramatic achievements. She has done modeling, radio and musical comedy work, and is also the holder of several beauty contest titles. Her major Kentwood Players performances were in "Holiday", "Chicken Every Sunday", "On the Bridge at Midnight", "George Washington Slept Here", and "Arsenic and Old Lace".



Nan Space is a native of Scotland and was a college drama major there. She danced as a can-can girl in the Olio of Kentwood Players' last Melodrama, and then appeared as the whimsical maid in the production of "Love From a Stranger".



Janet Marcom is one of the original 7 members of Kentwood Players, appearing in "You Can't Take it With You", "Fresh Fields", "Curse of an Aching Heart", "The Dark Tower", "On the Bridge at Midnight", and "Three's A Family". In addition to her fine performances, Janet has been valued as an ardent and efficient worker for every Kentwood Players' production.



Vince Sonsini has been associated with the theatre for many years. He was with the Agatha Players of New York, was a night club entertainer, and has been heard on radio. Since his clever portrayal of the villain in "Curse of an Aching Heart", Vince has aimed his considerable talent towards directing. Westchester audiences will well remember his excellent direction of such productions as "The Dark Tower", and "Love From a Stranger".



Lee Braude is another original member of Kentwood Players. In the WAVES for two years, Lee starred in two training films made for WAVE recruiting. Subsequently Lee did modeling and studied drama in New York. She has been seen in the Kentwood Players production "You Can't Take It With You".



Betty Francis studied drama at Arizona State College. In Westchester, Betty has devoted much of her time toward coaching children in art and drama. Her appearances in Kentwood Players' productions have been in "Chicken Every Sunday" and "Three's A Family".



Betty Reddin is also a newcomer to little theatre work. While she has been active in Kentwood Players workshop presentations, this is Betty's first appearance on the stage. At present, Betty is President of Cowan School P.T.A.



Lynn Neuman's past experiences lend a special significance for her role in "Cry Havoc". In 1945, Lynn toured the South Pacific with a U.S.O. group, and entertained servicemen with her enactment of the leading role in a 3-act comedy, "The First Year". Kentwood Player audiences will remember Lynn for her roles in "Chicken Every Sunday" and "Love From a Stranger".



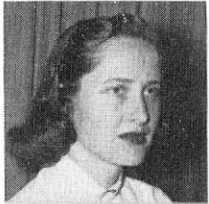
## WHO'S WHO IN THE CAST (Con't.)



Jill Duncan's first appearance in the theatre was at the age of 8. She majored in drama at the University of Arizona, and was associated with the Tucson Little Theatre. She has also been seen with Gellers Theatre in Hollywood. This is Jill's first appearance in a Kentwood Players' major production.



Ethel Sheneman was an active member of the Phoenix Little Theatre. While a civilian employee at Luke Air Force Base, she toured nearby bases with the Luke Little Theatre Group. Ethel is another new member of Kentwood Players although she has demonstrated her capabilities to the group by her efficient handling of props during the last production.



Doris Brown was a music major at U.C.L.A. She has appeared on radio, T.V. and the concert stage, and has sung with the NBC Symphony Orchestra. Doris won a city-wide Young Adult Vocal Contest. This is Doris' first effort in drama.



Betty Ward comes to Kentwood Players with no previous experience, but we predict she will be seen again in forthcoming productions.

Watch your local papers for opening date of Kentwood Players forthcoming production of the comedy

## "THE MALE ANIMAL"

## PRODUCTION STAFF

Production Manager	Arky Marcom
Sound Effects	Farnol Francis
Properties	Doris Brown
Technicians	Tom Reddin, Ed Murray, Tom Cammidge
Make-up	Urchyl Bohard
Publicity	Lynn Neuman
Programs	Gloria Rosen
Tickets	Homer Ralles
Hospitality	Trudy Aiken
Set Design and Construction	Harry Pierce, Arky Marcom

